

## Foreword

This user's manual explains the installation procedure of the CA700 firmware update tool.

## Disclaimers

By downloading and installing this software, the customer agrees to all of the following disclaimers.

- Yokogawa bears no liability for any problems occurring as a result of downloading or installing this software.
- Yokogawa bears no responsibility for any damage caused directly or indirectly as a result of using this software.
- This software is provided free of charge, however no unlimited warranty against software defects exists, nor is any claim made that the product is free of all defects whatsoever. Also, Yokogawa is not always able to repair defects ("bugs") in, or respond to questions or inquiries about this software.
- Yokogawa reserves all rights to this software, including but not limited to all property rights, ownership rights, and intellectual property rights.

## Trademarks

Windows are either registered trademarks or trademarks of Microsoft Corporation in the United States and/or other countries. For purposes of this manual, the TM and ® symbols do not accompany their respective trademark names or registered trademark names. Other company and product names are trademarks or registered trademarks of their respective companies.

## System Requirements

- **Personal Computer (PC)**  
A PC with a Core2 Duo 2 GHz or faster CPU and 1 GB or more of memory
- **Operating System**  
Windows 8.1, or Windows 10
- **Connection Cable**  
USB cable (A – mini B)

## Supported instruments

- CA700 Pressure Calibrator

## Supported library

- USB Driver for CA series Version 1.0.1.0 or later

### 1. Overview of firmware upgrade.

By using the CA700firmware upgrade tool, make the CA700start up in boot mode and write the firmware. Communication interface with the PC is USB.

### 2. Preparing for firmware upgrade

Follow user's Manual "CA Series USB Driver Installation Procedure", to install the USB Driver on the PC.

### 3. Note the firmware upgrade

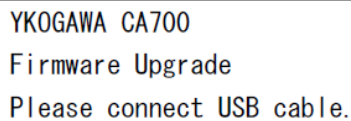
Be careful not to put the power off of CA700 or let the battery power go off during upgrading.

## Note

Updating firmware version 1.21 or earlier to 1.22 or later initializes the internal memory and erases the saved data. Before updating, save the data in the internal memory to a PC etc.  
Refer to the instruction manual for how to save the data in the internal memory.

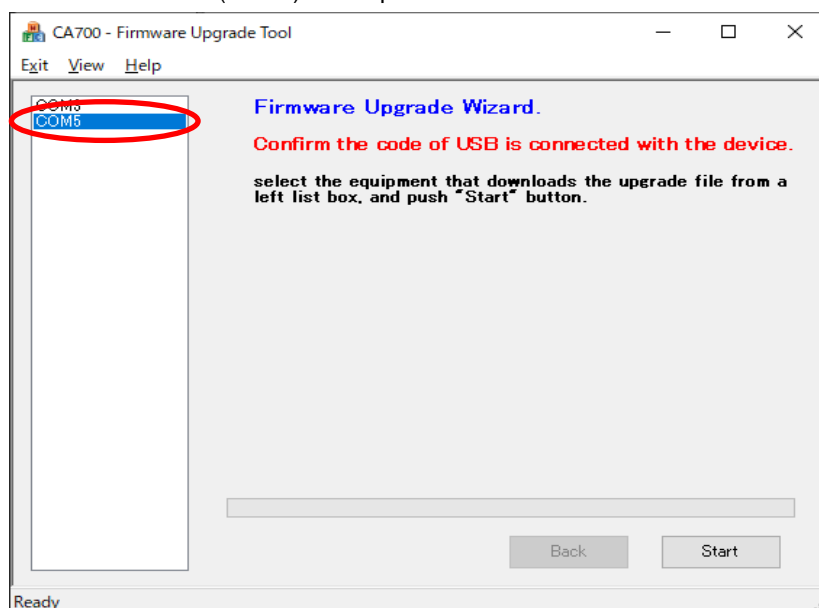
### 4. Firmware upgrade procedure

- (1) Download the firmware data and firmware upgrade tool (FirmwareUpgradeTool.exe) to the PC and keep in a folder of your choice.
- (2) Connect the measuring instrument to your PC with USB cable.
- (3) Press the POWER key while pressing the F3 key.  
Confirm that the LCD screen of the CA700 displays below.



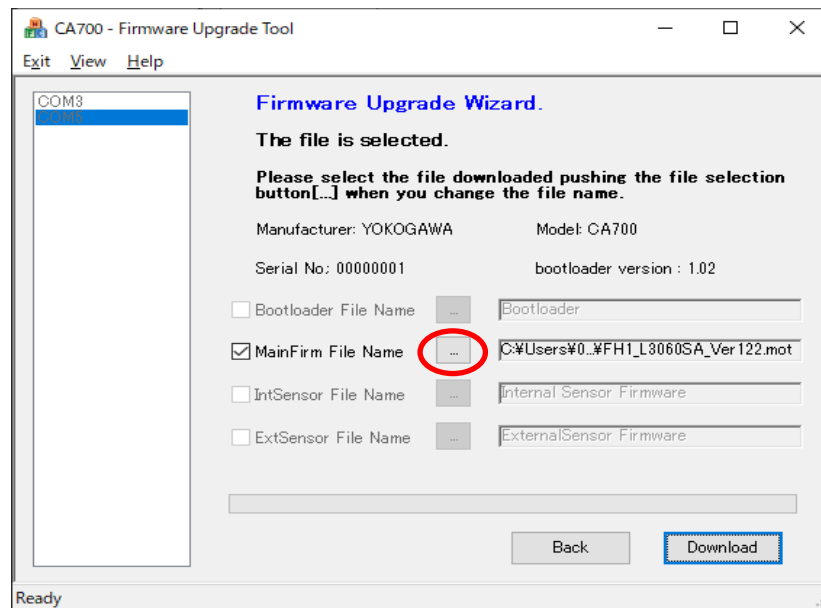
YKOGAWA CA700  
Firmware Upgrade  
Please connect USB cable.

- (4) Do the upgrade of the firmware with the following procedure.
  - 1) Start the firmware upgrade tool (FirmwareUpgradeTool.exe).
  - 2) Select the COM port that is connected to the CA700, click the "Start" button.  
Please confirm by "Device Manager" for the COM Port number connecting to CA700.  
It is indicated as "CA Series CDC (COMx)". "x" represents the COM Port number.

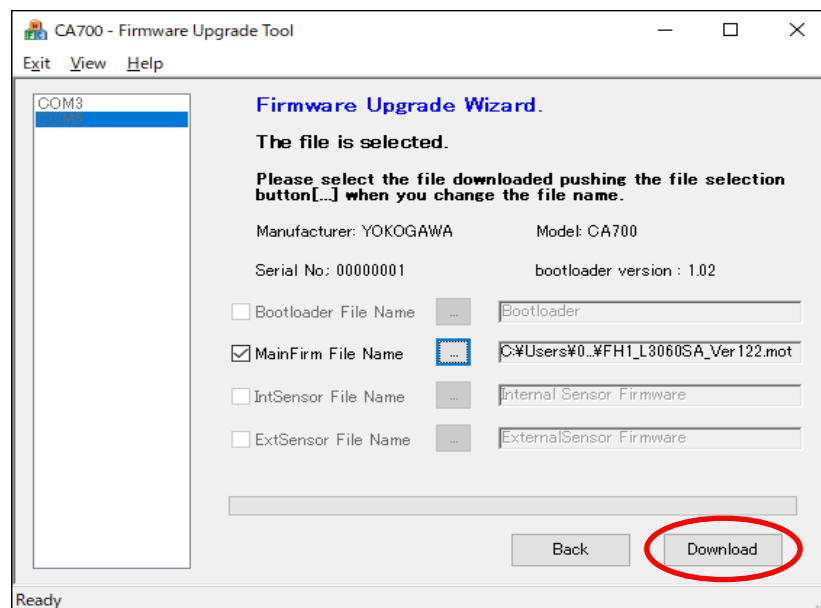


- 3) Press the browse button "..." to select the program (CA700MainFirmware\_Vxxx.mot) to be updated. ("xxx" is a version number.)

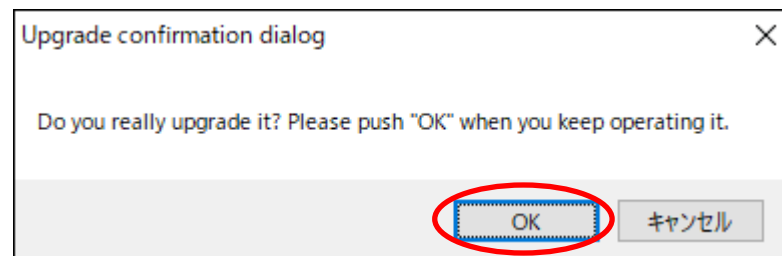
Select the program type (MainfirmwareFile Name) that you want to update.



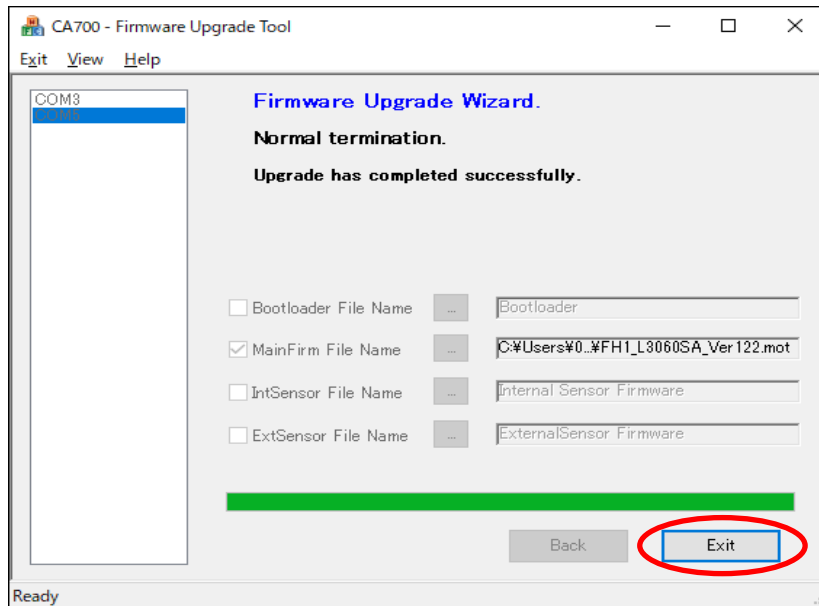
- 4) Click "Download".



- 5) The confirmation dialog box appears, click "OK".



- 6) When the progress bar becomes green 100% and displays as "Upgrade has completed successfully", the writing is success. Click "Exit" to end.

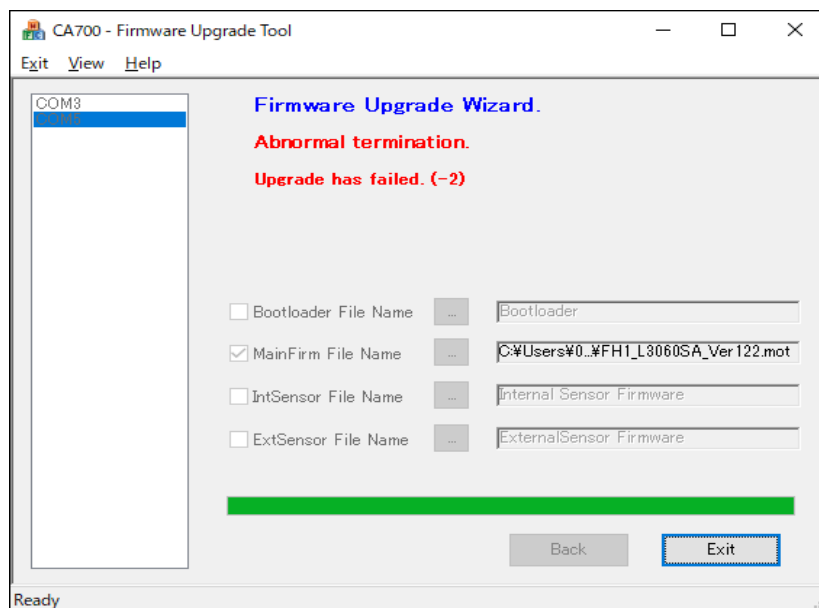
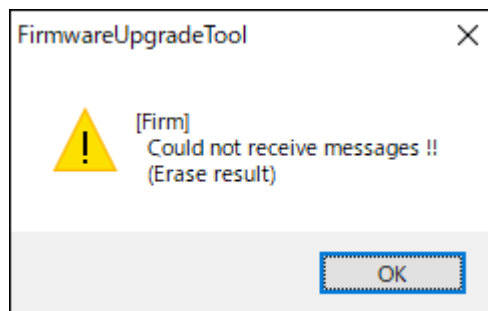


In case of abnormal termination, a dialog will indicate the abnormal content. It is recommended to follow the displayed content and try writing work again.

Note)

Do not put the power off of CA700 at this time.

Close the firmware upgrade tool and reboot.



- 7) Confirm normal start, by pressing the POWER key of CA700 more than one second and release.

When after upgrade, it could indicate "Error" on "Settings Check" when powering on.

This is because the setting files are just initialized. Therefore, there is no problem on the main unit.

Please proceed to "Top Menu" by pressing "ENTER" key.

---